

## 2009-2010 ARTISTS IN RESIDENCE

Fall 2009 Artists in Residence (October 13 – December 16, 2009)

This fall and spring Anderson Ranch will offer an artists' residency program designed to encourage the creative, intellectual and personal growth of emerging and established visual artists. Finalists were chosen on the basis of artistic merit by an independent jury of established working artists and will live and work at Anderson Ranch for approximately 10 weeks. While in residence, all share in an established community of interaction, conceptual development and intense production of work.



### Miranda Howe (ceramics)

Miranda Howe works out of her studio in southern New Mexico. Her pieces are layered with geologic and ornamental elements. She received her BFA from Texas Tech University and her MFA from Montana State University. Miranda has participated in residencies at the LH Project in Joseph, Oregon and the Archie Bray Foundation for the Ceramic Arts in Helena, Montana, where she was awarded the Lilian Fellowship.

### Jee Young Lee (ceramics)

From Seoul Korea, Jee Young Lee earned her BFA and MFA in ceramics from Ehwa Womans University. She has worked as both the Assistant of the Ceramic Art Department at Ehwa University and as a docent for the Victoria & Albert Museum in Korea. Jee Young is interested in mixing ceramic art with sound which results in work that is touchable and appeals to the ear. Through her work, Jee Young focuses on topics of humanity.



### Sparky Campanella (photo/digital)

Sparky Campanella is a New York based self-taught photographer. His images are minimalist, with a refined absence of content that leaves room for interpretation and expansion. His artistic goals lie in taking photography beyond 2D space and towards the sculptural. Sparky grew up in Pittsburgh and has been photographing almost as long as he's been walking.



### Hui Y. Tsai (photo/digital)

Hui Y. Tsai was born in Taipei, Taiwan. She received her MFA at the San Francisco Art Institute in 2009. She is an interdisciplinary artist working in photography, digital illustration, installation, sculpture, video, and performance. She has exhibited internationally in the United States, Ireland, and Taiwan. Through repetitive self-deconstruction and re-construction, Hui investigates the physical presence of her body and its' relationship with mental/real space.



### Malinda Bray (painting/drawing)

Malinda Bray is originally from Phoenix, AZ, and currently lives and works in Denver, CO. Her work addresses the intersection of the natural world and urban architecture through the use of materials, pattern and fragmentation. Malinda earned an MFA in Painting and Intermedia from the University of Iowa in 2005, and teaches at Metropolitan State College of Denver and the University of Denver.



### Chang-Ae Song (painting/drawing)

Chang-Ae Song's MASS drawings explore human nature and the human condition in relation to current cultural, social, ethical and political situations. She uses multiple images of human figures to form landscapes in graphite and acrylic. Born in Seoul, Korea,

Chang-Ae earned her BFA and MFA in Korean Painting from Sookmyung Women's University and a second MFA in Painting from the University of Oregon. Song was recently included in the 9th Northwest Biennial at Tacoma Art Museum.



### Drew Peterson (printmaking)

Drew Peterson lives and works in Minneapolis, Minnesota. Drew studied art at the San Francisco Art Institute and returned to Minneapolis to complete his BFA at the University of Minnesota. At both schools, he studied traditional and contemporary printmaking processes while integrating other studio practices including drawing and painting. He actively participates in larger artistic projects including, curating and organizing group exhibitions, mentoring and teaching youth art programs, and collaborating on large scale mural projects.

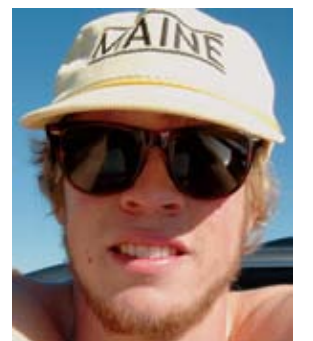


### Margaret Steward (printmaking)

Margaret Steward uses monotypes as a vehicle to draw out ideas, which are sometimes translated into other media. Her inquiries into the material world are both scientific and aesthetic, and the sublime place where the two meet. She holds a BFA from Bard College and a BA in Geology from the University of South Florida.

### Michael Hahn (sculpture)

Michael Hahn's recent work explores the relationship between product consumption and product manufacturing while offering new concepts for stimulating local economies. A wide range of manufacturing processes and materials are utilized in the creation of his prototypes. Michael was born and raised on the coast of Maine and recently earned his BFA in Industrial Design from the Rhode Island School of Design.



### Christopher Manzione (sculpture)

Christopher Manzione earned a BFA in sculpture from William Paterson University, a Post-Baccalaureate degree From Maryland Institute College of Arts and his MFA from Mason Gross School of Art. His most current body of work explores the spaces where the distinction between natural and industrial blurs, while investigating our understanding of time through these points of interaction.



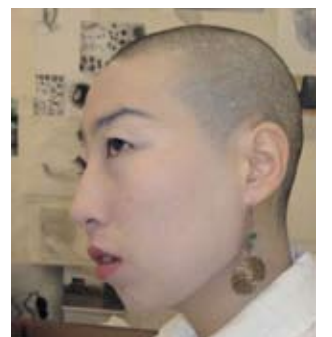
### Mie Preckler (sculpture)

Born in Antwerp, Belgium, Mie Preckler currently lives in Oakland, CA where she is a professor at the California College of the Arts. Her site-specific installations and interventions have been shown widely in the United States, South America, and Europe. She has received numerous awards, including fellowships from the National Endowment for the Arts, the Phyllis C. Wattis Foundation, and the Instituto Sacatar.



### Jayoung Yoon (sculpture)

Born in Seoul, Korea Jayoung Yoon received an MFA from Cranbrook Academy of Art in 2009 and a post-baccalaureate certificate from Maryland Institute College of Art in 2007. She has attended residencies at Skowhegan in Maine and the Art Center/South Florida. Her work uses video, photography, installation, and performance to deal with the perception of being present.



### Kate Hawes (furniture/wood)

Kate Hawes has been working in wood for over 15 years. She received a BA from Sarah Lawrence College and a certificate in Cabinet and Furniture Making from the North Bennet Street School in Boston. She designs and builds pieces of work that bridge the spectrum between sculpture and furniture. Kate works in the 10,000 sq. ft. woodshop she helped start 9 years ago in Brooklyn, NY.



### Liz Thorp (furniture/wood)

In her work, Liz Thorp explores themes related to interdependence and autonomy, and incorporates elements from the natural world as a means to interpret human behavior. The resulting works are installations with kinetic features inspired by human and animal interactions. Liz was born and raised in Gates Mills, Ohio and received her BFA in Sculpture from the Rhode Island School of Design. She currently resides in Aspen.

